



Letter from the Executive Director

Dear Friends,

Welcome to the first edition of the Groundwork Lawrence newsletter! It has been a busy and exciting year, and we are grateful to so many of you who have supported our work. One of the great pleasures of my job is getting to know and work with hundreds of people that participate in our projects and programs. I hope this newsletter will give you a quick snapshot of this extraordinary network of partners, funders, and volunteers.

This year has witnessed several important milestones. At the national level, Groundwork USA hired its first Executive Director, Vernice Miller-Travis, a well-known leader in brownfield and environmental justice issues. Ms. Miller-Travis is already hard at work building the national network with impressive results. Locally, we have launched a new after-school Green Team program for Lawrence youth; completed landscape design work for five new parks as well as recreational upgrades to ten City-owned parks; coordinated the successful remediation of the Brook Street site, a 2.7-acre former brownfield that will soon become the first jewel in the Spicket River Greenway; and cut the ribbon on trail improvements at Den Rock Park. In partnership with the City of Lawrence and the State of Massachusetts, we have raised more than \$1.2 million in public and private funding for a variety of open space design and construction projects.

Looking to the future, we are developing a new community gardening/ Farmer's Market program to coincide with the spring opening of our first garden at Union & Mechanic Streets; collaborating with City and State officials and local property owners to create new walking/cycling paths along the Merrimack River; and continuing our campaign to clean up and reclaim the City's alleyways for public open space. We are also preparing to launch a new web site and on-line reference library that will make it easier to share information and interact with the public. We look forward to updating you on these and other projects in the Spring 2006 edition of the newsletter. Until then, best wishes for a peaceful and happy holiday season from all of us at Groundwork Lawrence.

Yours truly,

Maggie Super Church, Executive Director

PS- If you know anyone who would like to join our mailing list, please give us a call at 978-974-0770 or send an email to msuper@groundworklawrence.org.

In this issue:

- ✘ Letter from the Executive Director
- ✘ Meet the Staff & Board
- ✘ Groundwork Lawrence Project Updates
- ✘ Upcoming Events

Meet the Staff & Board

Groundwork Lawrence is a small but growing organization consisting of three full-time staff (Executive Director, Deputy Director, and Youth & Stewardship Program Coordinator) with expertise in urban and environmental planning and design, community outreach, and education. Groundwork also retains the services of a variety of consultants with expertise in landscape architecture, urban forestry, brownfield site assessment and cleanup, environmental education, real estate development, and financial management.

Our nine-member Board of Directors represents a variety of professions and interests closely aligned with Groundwork Lawrence's mission. Groundwork Lawrence is an affiliate of Groundwork USA, a national network of non-profit organizations working to improve urban neighborhoods through joint environmental action.



Maggie Super Church,
Executive Director

Ms. Church has been the Executive Director at Groundwork Lawrence since 2004, having previously served as the Associate Director from 2001 to 2004. She is responsible for organizational development and strategic management of open space and neighborhood revitalization initiatives. Ms. Church holds a Master of City Planning from M.I.T., an MSc in Urban Design from the Edinburgh College of Art in Scotland, and a BA in Architecture from Yale University. Prior to joining Groundwork Lawrence, she was a Senior Planner/Urban Designer at Goody, Clancy & Associates. The commitment and dynamic leadership she has brought to GWL was recognized in 2003, when she received the Excellence in Public Service Award from the M.I.T. Department of Urban Studies and Planning. A resident of Lawrence, she is also a Manager and Assistant Coach at Zeta Fencing Studio in Lawrence, Board Member and Vice-President of the Lawrence

History Center, and Commissioner of the Essex National Heritage Area.



Kate Gormly, *Deputy Director*

Ms. Gormly is currently Groundwork Lawrence's Deputy Director, having previously served as Project Manager and Environmental Outreach Coordinator.

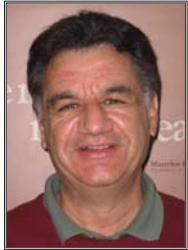
Ms. Gormly brings a depth of experience in community involvement, the reclamation of contaminated land for active reuse, and policy initiatives for sustainable environmental change. She is currently responsible for Groundwork Lawrence's finances and manages a variety of projects including a new community garden utilizing Low-Impact Design principles. Ms. Gormly holds a Master's degree in Urban and Environmental Policy and Planning from Tufts University and a B.A. in Human Development and Social Relations from Kalamazoo College. Prior to joining Groundwork Lawrence as Deputy Director, Ms. Gormly was Senior Planner/Harbor Planner for the City of Salem Department of Planning and Community Development.



Lesly Melendez,
*Environmental Outreach
Coordinator*

Ms. Melendez is the Youth and Stewardship Program Manager at Groundwork Lawrence. In this capacity, she is responsible for managing the Green Team, Lawrence Outdoor Youth Corps, Adopt-a-Park, Adopt-a-Tree, and Ambiente Job Training programs. She also coordinates a variety of annual events including the Spicket River Cleanup, the Kite Festival, and Glow Gala. Ms. Melendez plays a key role in community outreach with a particular focus on the Spicket River Greenway. In addition to her position at Groundwork, she is currently pursuing a degree in Business Management at Cambridge College and serves as a member of the Planning

Board and the Lawrence CommunityWorks Board of Directors. She is a resident of Lawrence and a fluent Spanish speaker.



John Faro, Board President

Mr. Faro, *Board President*, is *Park Supervisor for the Lawrence Heritage State Park*, a division of the Commonwealth's Department of Conservation and Recreation (DCR). In

his capacity with LHSP, John has been instrumental in forging project-based and programmatic partnerships with Groundwork Lawrence, most recently as an advisor and instructor for the Lawrence Outdoor Youth Corps program. Mr. Faro is also an active member of the Reviviendo Gateway Initiative Steering Committee, a joint project of Groundwork Lawrence and Lawrence CommunityWorks to revitalize the historic center of the city. Mr. Faro is currently working on a joint initiative with Groundwork Lawrence, the City and local partners to create new riverfront trails along the Merrimack.



Kristen Harol, Board Treasurer

Ms. Harol, *Board Treasurer* and resident of Lawrence, is *Deputy Director for Lawrence CommunityWorks (LCW)*, a non-profit Community Development Corporation.

Ms. Harol received her Master of City Planning degree from M.I.T., specializing in Housing and Community Economic Development. During her tenure at Lawrence CommunityWorks, the organization has grown from a single staff person to 21 full-time staff with an operating budget of \$1.5 million and has served as the engine of over \$11 million in investment in Lawrence. Harol developed and project-managed LCW's first affordable homeownership project, the Summer Street Homes, which won HUD's national Gold Award for Excellence in Affordable Housing in 2001. She is a Spanish speaker who has also served as

a community organizer and neighborhood planner in the North Common neighborhood of Lawrence. Ms. Harol's prior professional experience includes project management in environmental consulting, work in the international textile industry, and in Geographic Information Systems. Ms. Harol has received awards from the American Planning Association and the Excellence in Public Service Award from the M.I.T. Department of Urban Studies and Planning. As the Groundwork Lawrence Treasurer, Ms. Harol brings a wealth of experience in organizational development and financial management as well as neighborhood revitalization.



Nelson Ortiz, Board Clerk

Mr. Ortiz, *Board Clerk* and resident of Lawrence, is *Program Coordinator for the City of Lawrence Recreation Department*. He brings a strong commitment to helping with the

design and improvement of City parks, as well as working with local youth. Mr. Ortiz's knowledge of Lawrence's 28 city-owned parks and his familiarity with the City's recreational needs are invaluable assets to the organization. Mr. Ortiz also serves as Director of the Jennifer Ortiz Foundation, a philanthropic organization that supports the development of Lawrence youth.



Chris Corbett, Board Member

Mr. Corbett is an *independent consultant* specializing in troubled manufacturing companies and a member of Executive Service Corps of New England, which

provides consulting services to non-profit organizations. Mr. Corbett is involved in a variety of philanthropic efforts in the Merrimack Valley, and serves on the Boards of Hurricane Island Outward Bound, Essex Country Community Foundation, Family Service, Inc. and Lawrence Partners in Education.



Tom Galligani, Board Member

Mr. Galligani is a *planning and economic development consultant* based in Andover, Massachusetts. He served as Director of the City of Lawrence Office of Planning and Development from 2002 to 2004. Mr. Galligani brings extensive experience in urban planning and municipal affairs as well as a working knowledge of City contracting and management procedures.



Eli Levine, Board Member

Mr. Levine is *Vice President of Acquisitions for the Brownfields Recovery Group*, a private firm located in downtown Boston. In this capacity, Mr. Levine has extensive experience in brokering land transactions and the purchase and sale of contaminated parcels. Mr. Levine's professional expertise has helped Groundwork Lawrence to reclaim and redevelop vacant and contaminated parcels for open space.



Aaron Toffler, Board Member

Mr. Toffler currently serves as *Director of the Natural Cities Program at the Urban Ecology Institute*, based at Boston College. Formerly an environmental attorney in private practice, Mr. Toffler has spent the majority of his professional career representing non-profit organizations and public agencies in urban areas, and has been involved in community organizing, negotiating among diverse stakeholders, and legal advocacy when necessary. Mr. Toffler has also worked in academia as the director of the Roxbury Community College Center for Environmental Education. He is a graduate of, and Lecturer at, Boston College Law School.

Gloria Machado, Board Member

Ms. Machado is a *Social Worker for the Department of Social Services* in Lawrence and brings extensive experience in community outreach and programming, especially for youth and the elderly. In addition to her work with DSS, she is pursuing a graduate degree in Community Economic Development at Southern New Hampshire University. Ms. Machado previously worked at Family Services, Inc. in Lawrence where she was a leader for the "Casa de Salud" (healthy homes) program.



Rebecca Veilleux, Board Member

Ms. Veilleux is a *Biology Teacher at Lawrence High School* and a resident of Lawrence. In her capacity at Lawrence High, she helped to found and served as a mentor for the Biodiversity Club. This past spring, due in part to the rigorous scientific method she employed with the club's student members, the Biodiversity Club was invited to the First Earth Summit on Biodiversity for Kids in Quintana Roo, Mexico, where the group shared the findings of their ecological assessments of Lawrence's Spicket River. Ms. Veilleux earned her M.S. in Environmental Studies this past spring from Salem State College.

6th Annual Groundwork USA Assembly



Groundwork USA held its 6th Annual National Assembly in Lawrence, MA, hosted by Groundwork Lawrence, on September 14 – 16, 2005. The conference attracted representatives from Groundwork Trusts across the country, as well as representatives from the National Park Service, the U.S. Environmental Protection Agency, Groundwork United Kingdom, and numerous public, private and non-profit partners. Groundwork USA leads a network of non profit organizations called Groundwork Trusts, which work to help communities impacted by contaminated land (brownfields) and other issues to improve their environment, economy and quality of life.

Engaging young people in the revitalization of their own community is a major focus of the



Groundwork mission.

The National Assembly kicked off at the newly-opened Sal's Riverwalk Restaurant, overlooking the scenic Merrimack River. Highlights of the morning program included opening remarks from Senator Sue Tucker and Representative William Lantigua; an announcement of the new national partnership between Groundwork USA and the National Civilian Community Corps (an Americorps program); and a keynote address by Massachusetts Secretary of Commonwealth Development Doug Foy. Following the morning program, conference participants toured the

city to view Groundwork Lawrence project sites, concluding with a cocktail reception at the Groundwork Lawrence office, followed by dinner at the Bashara Boathouse in Lawrence. The event was a big success, with more than 75 visitors in attendance from across the U.S. and the United Kingdom!

city to view Groundwork Lawrence project sites, concluding with a cocktail reception at the Groundwork Lawrence office, followed by dinner at the Bashara Boathouse in Lawrence. The event was a big success, with more than 75 visitors in attendance from across the U.S. and the United Kingdom!



Groundwork Lawrence Project Updates

Youth Programs

Groundwork Lawrence hosts a variety of programs that engage local youth in hands-on environmental work across the City. Through our summer and after-school programs, Lawrence teens work to improve their own neighborhoods, from water quality monitoring to riparian habitat restoration.

The programs combine hands-on service learning, field trips, and one-on-one interactions with environmental professionals. The Green Team and Lawrence Outdoor Youth Corps also provide stipend support for participants. Groundwork Lawrence youth programs emphasize leadership development, team-building, and a cross-disciplinary approach to environmental issues.

▪ **Groundwork Green Team, Summer 2005**

Funders & Partners: City of Lawrence, State of Massachusetts Recreational Trails Program, Massachusetts Environmental Trust

Contractors: SM&B Environmental Services, Cosmos Associates Landscape Architects, Precision Group Inc.



Groundwork Green Team Members (from left): Jennifer Pagan, Estephany Berroa, Rodolfo Morel, Jr., Emmanuel Espallat, Nefty Correa, and Melanie Lilly.

The Groundwork Green Team spent eight weeks this summer making improvements to **Den Rock Park** in Lawrence. The Green Team included six students from Lawrence between

the ages of 12 and 15. The team cleaned up the parking lot and trails and performed timber stand improvements. They also participated in a variety of educational field trips, including visits to the Lowell National Historic Park, the water treatment plant in North Andover, the Lawrence Hydroelectric Facility, and other sites of interest. Highlights of the summer included a special bird-watching expedition in Den Rock Park with MassAudubon and an overnight trip to Hilton-Winn Farm in August with the **Lawrence Outdoor Youth Corps**. The Green Team worked under the supervision of Groundwork staff member Lesly Melendez and arborist Guy Shepard. GWL completed additional work at Den Rock Park this fall, including the installation of water bars and wood chips along the main entrances trails, a new trail head kiosk, trail maps, and trail signs. The ribbon-cutting was held on November 3rd and attended by Mayor Michael J. Sullivan, Conservation Commission chairman Tennis Lilly, City Attorney Charles Boddy, Director of Planning and Development Fred Carberry, members of the Groundwork Green Team, project partners and friends.

▪ **Lawrence Outdoor Youth Corps, 2005**

Funders & Partners: City of Lawrence, Greater Lawrence Sanitary District, Merrimack Valley Workforce Investment Board, Lawrence Summer Fund, Mayor's Summer Jobs Initiative, MassInnovation LLC, Riverwalk Realty Trust

Contractors: SM&B Environmental Services, Olde New England Landscape & Design, Vegetative Control Services.

The 2005 Lawrence Outdoor Youth Corps (LOYC) program

included a group of ten students from Lawrence between the ages of 16 and 18.



Lawrence Outdoor Youth Corps members (from left): Deborah Gonzalez, Ana Maria Hernandez, Zachary Francisco, Alex Reinoso, Claudio Rene, Yashira Robles, Ximena Rueda (program instructor), Latoya Durham, Alan Reinoso, and Carlos Roman.

The LOYC spent eight weeks clearing overgrown trees and brush along the sloped southern embankment of the Merrimack River between Route 495 and the Duck Bridge. The crew did an amazing job opening up views to the river while preserving native trees along the riverbanks. The LOYC also participated in an overnight trip to Hilton-Winn Farm in August with the Green Team. The LOYC worked under the supervision of two crew leaders, Gabriel Verdaguer and Ximena Rueda, with technical assistance from arborist Guy Shepard.



The LOYC worked in groups to cut and haul tree branches up a steep slope. Building teamwork skills as well as technical skills is a central focus of the program

Lawrence High School Biodiversity Club, Spring/Fall 2005

Funders & Partners: Forest Foundation, Clipper Ship Foundation, Peggy Corbett Memorial Fund, Faye & Chet Sidell, Urban Ecology Institute, Youth Enrichment Center at Hilton-Winn Farm

The Lawrence High School Biodiversity Club, formed by a group of students under the leadership of Biology teacher and GWL Board member Rebecca Veilleux, provides opportunities for students to become



Lawrence High School Biodiversity Club (clockwise from top): Rebecca Veilleux, LHS Biology Teacher and Club Advisor; Yashira Robles, Estephany Barroa, and Zachary Francisco.

more actively involved with community-based environmental initiatives. The Biodiversity Club encourages students to participate in programs and events such as the Annual Spicket River Clean-Up and the development of habitat restoration plans. A fundamental objective of the club is to encourage students to assume leadership roles in promoting the conservation and preservation of our local natural resources. Over the past year, Groundwork Lawrence has been very involved in supporting the activities of the Biodiversity Club. GWL helped raise funds to send three students from the Club to the First Earth Summit for Kids in Quintana Roo, Mexico in February 2005, where they presented their findings from Rapid Ecological Assessments of the Spicket River conducted in partnership with GWL and the Urban Ecology Institute. In March 2005, GWL staff and Ms. Veilleux brought a group of students from the Biodiversity Club and the Groundwork Green Team to Hilton-Winn Farm for an overnight visit. They went cross-country skiing, explored the winter woods around the farm, and discussed future plans for Groundwork youth

programs and projects. The Biodiversity Club was formally recognized by the Lawrence City Council with a special proclamation on May 3, 2005.

6th Annual Kite Festival

Funders & Partners: Lawrence Heritage State Park, Lawrence Hydroelectric Associates, Faye & Chet Sidell, Family Service Inc.

Contractor: Archie Stewart/ Kite Fabrications



Hundreds of kids enjoyed building and flying their own kites at the 6th Annual Kite Festival.

The 6th Annual Kite Festival, held on June 11, 2005 at Pemberton Park, was a great success! With assistance from kite-maker Archie Stewart, local children built more than 300 kites. Total attendance for the day was well over 500 people.



Pemberton Park Dedication

The Pemberton Park/Workers Place dedication ceremony was attended by City and State officials including (from left): Mayor Michael J. Sullivan; Priscilla Geigis, Director of State Parks and Recreation; Representative David Torrissi; Representative William Lantigua; Senator Susan Tucker; and Marc Laplante of the Lawrence Redevelopment Authority.

The Festival took place in conjunction with Family Fiesta hosted by Family Service, Inc. as well as the re-dedication of Pemberton Park/Workers' Place. The ceremony celebrated the completion of a \$2.3 renovation and expansion of the park, including new walkways, a boardwalk, overlooks, irrigation, lighting, benches, trash receptacles, and artwork. A series of bronze "passports" representing Lawrence's many immigrant groups were also unveiled at the event.

UrbanRiver Visions Program

The Massachusetts UrbanRiver Visions program is assisting communities across the state, including Lawrence, to reclaim their waterfront areas for community use. The program provides technical assistance and grant funding to design and implement community initiatives that restore riverfront areas for a mix of uses and activities. In Lawrence, this funding has supported a number of projects in the North Common and Arlington neighborhoods that build on the broader visions established by the Reviviendo Gateway Initiative and the Spicket River Greenway Task Force. With funding from the program, GWL has completed design and construction documents for several major park projects that, when built, will total more than \$1.5 million of capital investments. All of these projects are located adjacent to the Spicket River and/or the North Canal, and will contribute to a new network of waterfront parks and trails throughout North Lawrence.



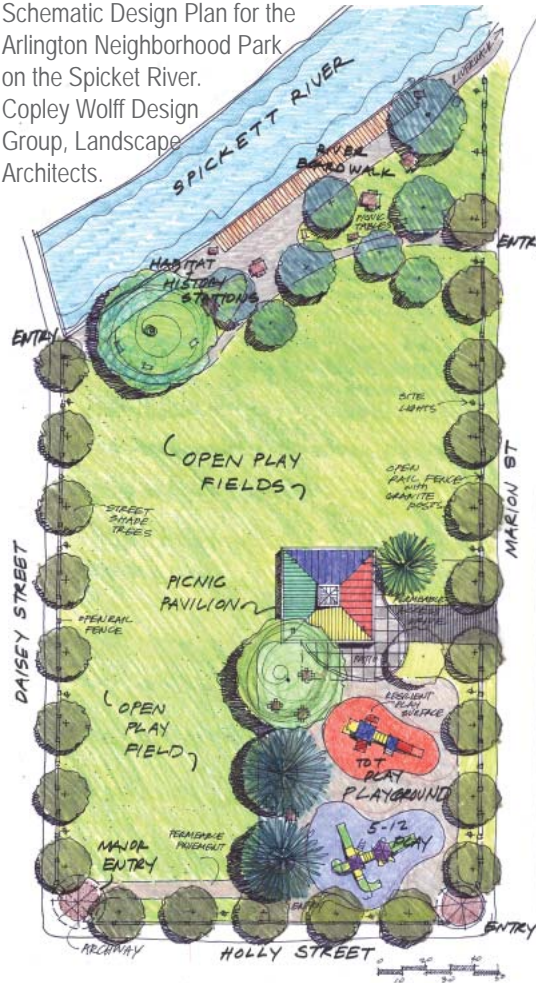
An idyllic spot along the Spicket River in North Lawrence.

■ Arlington Neighborhood Park (FEMA site)

Funders & Partners: City of Lawrence, State of Massachusetts UrbanRiver Visions Program, Arlington Community Trabajando, Urban Ecology Institute

Contractor: Copley Wolff Design Group

Schematic Design Plan for the Arlington Neighborhood Park on the Spicket River. Copley Wolff Design Group, Landscape Architects.



With funding from the Massachusetts UrbanRiver Visions program, GWL and our sub-contractor Copley Wolff Design Group completed construction drawings for a new 1-acre park, riverfront walking path and roadway improvements at the "FEMA site" adjacent to the Spicket River in the Arlington neighborhood. The design process included several neighborhood meetings organized by our project partner Arlington Community Trabajando, with additional support from the Urban Ecology Institute.

The Arlington Neighborhood Park was also the site of a successful Earth Day cleanup and celebration on April 23, 2005. The event was held by GWL in partnership with ACT and the Urban Ecology Institute. More than fifty local residents turned out to help clean up the park, remove invasive knotweed, and plant ten new trees, eight shrubs, and a sunflower garden.



Earth Day Cleanup

One of ten new trees that were planted by local residents at the Arlington Neighborhood Park.



▪ Methuen/Canal Street Infrastructure Improvements

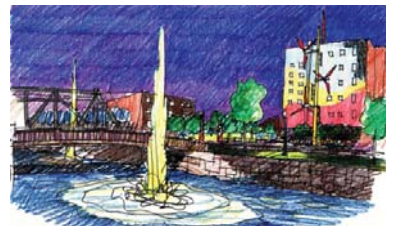
Funders & Partners: City of Lawrence, State of Massachusetts UrbanRiver Visions Program, Lawrence CommunityWorks, Reviviendo Gateway Initiative Steering Committee

Contractor: Copley Wolff Design Group

With funding from the Massachusetts UrbanRiver Visions program, GWL and our sub-contractor Copley Wolff Design Group completed construction drawings and bid documents for a new civic plaza on the northeast corner of Canal and Union Streets. Design work for this project also included conceptual plans for a downtown “Gateway” park on the northwest corner of Union and Canal Streets, the extension of Newbury Street to Canal Street, and implementation of a unified streetscape plan for the area. These conceptual plans will be used to help advance the ongoing planning for new mixed-use development on 5 acres of vacant and underutilized land in the heart of the RGI District. The design process included an RGI-sponsored community charrette as well as working meetings with current property owners.



Conceptual Design Plans for the Methuen/Canal Street Infrastructure Improvements along the North Canal. Copley Wolff Design Group, Landscape Architects.



▪ Misserville Skate Park

Funders & Partners: City of Lawrence, State of Massachusetts UrbanRiver Visions Program, Leonard School, Sk8 Kids

Contractor: Cosmos Associates Landscape Architects

With funding from the Massachusetts UrbanRiver Visions program, GWL and our sub-contractor Cosmos Associates completed construction drawings and bid documents for a new skate park, school yard renovations and a riverfront trail at the Misserville Park/ Leonard School. GWL is currently working with the City to secure construction funds for project implementation.

Ambiente Training Program

Funders & Partners: Merrimack Valley Workforce Investment Board, U.S. Environmental Protection Agency, Arlington Community Trabajando, Northern Essex Community College, Emergency Management Training Corporation

Seventeen people graduated from the EPA-funded Ambiente Environmental Training Program on April 28th. They are now certified to perform a variety of environmental cleanup jobs, and the Merrimack Valley Workforce Investment Board is helping to place them in local jobs. We are currently beginning the second cycle of training.



Ambiente program participants at the graduation ceremony, held at Lawrence Public Library. Front row (from left): Miguel Brito, Eduardo Brea, and Michael Correa. Back row: Brenda Zayas, Gustavo Jimenez, Raul Santiago, and Dennis Santiago

Clean Spicket Campaign

Funders & Partners: City of Lawrence, Massachusetts Environmental Trust, Cox Foundation, Spicket River Task Force, Arlington Community Trabajando, Urban Ecology Institute

The Clean Spicket Campaign engaged the local community in a year-long effort to curb illegal dumping along the Spicket River in North Lawrence. As part of the Campaign, Spicket River Task Force members assisted Groundwork Lawrence staff with identifying areas of pervasive dumping and reaching out to residents in these areas; researching anti-dumping legislation and fines; posting new "Keep it Clean" signs on all ten bridges over the Spicket River in Lawrence; and coordinating their activities with a citywide DEP Strike Force hidden-camera program. On May 25th, 2005, GWL and our partners Arlington Community Trabajando, Urban Ecology Institute, and the City of Lawrence officially unveiled ten new signs along the bridges over the Spicket River. The signs include the "Spicket River-Keep It Clean" logo as well as information about state and local regulations and fines for dumping in the river.



New signage discourages dumping in and along the Spicket River.

Spicket River Cleanup

Funders & Partners: Jessie B. Cox Charitable Trust, City of Lawrence, Urban Ecology Institute, Arlington Community Trabajando, Lawrence CommunityWorks, Lawrence High School, Philips Andover Academy, Merrimack College, New Balance, Enel/ Essex Company, Jackson Lumber, the Lawrence Athletic and Civic Club, G & Z Pizza, and BFI Waste Management.



Rusted furniture, a lawnmower, and car parts were among the items removed from the riverbanks.

On September 24th, 2005, Groundwork Lawrence hosted the **4th Annual Spicket River Cleanup**. In total, 365 volunteers turned out to help clean the riverbanks. The volunteers cleaned five sites along the river, including adjacent bridges and vacant lots. The sun was shining for the first time ever, and everyone had a great time!

Alleyway Improvements - Timberland Serv-a-palooza

Funders & Partners: Timberland Corporation, Lawrence CommunityWorks, Reviviendo Gateway Initiative Steering Committee, SM&B Environmental Services, MassElectric



On September 22, 2005, Groundwork Lawrence and Lawrence CommunityWorks hosted a team of more than 300 volunteers from the Timberland Company and CityYear as part of the Timberland "Serv-a-palooza". The volunteers worked to improve three alleyways, removing trash, installing new stone dust and wood chip



pathways, planting flowers, and painting murals. Groundwork also secured the services of a tree crew from MassElectric to

assist with clearing the overgrown trees in the alleys.



Union / Mechanic Gardens

Funders & Partners: Massachusetts Office of Coastal Zone Management, City of Lawrence, Lawrence CommunityWorks, USDA Natural Resources Conservation Service
Contractor: Stillman Restoration/Design LLC

In collaboration with our partner Lawrence CommunityWorks, Groundwork Lawrence is currently in the design phase for a new community garden that will incorporate low-impact development and best practice storm water management techniques. The project is located in a formerly abandoned alleyway adjacent to the site of the Union & Mechanic Homes, currently in development by Lawrence CommunityWorks. The project also includes design work for a palette of options to mitigate storm water runoff on the adjacent housing sites. When built, the Union/Mechanic project will serve as a demonstration site that illustrates simple and low-cost techniques for integrating affordable housing, open space, and on-site storm water management. The groundbreaking for the project was held on June 7th as part of National Neighbor Week. The design charrette on June 23rd included a discussion of the site analysis and garden layout as well as a draft operations and maintenance plan. Garden construction is expected to be complete this spring.



Ready to start! Shovel in hand, attendees of the Groundbreaking for the Union/Mechanic Community Garden Project pause for a quick photo.

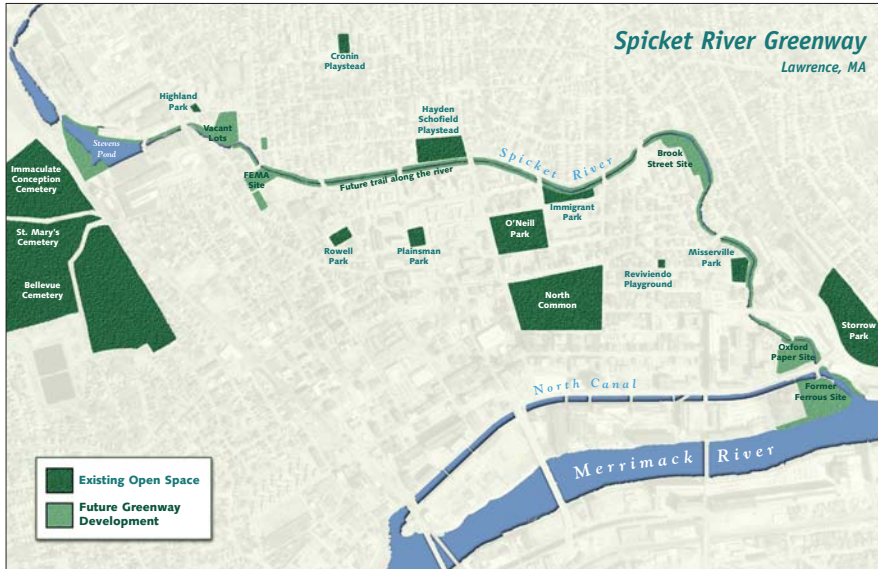
Brook Street Park



Schematic Design for Brook Street Park. .
 Copley Wolff Design Group, Landscape Architects.

Funders & Partners: Bank of America, City of Lawrence, Lawrence CommunityWorks, State of Massachusetts Urban Self-Help Program, State of Massachusetts Office of the Attorney General, U.S. Environmental Protection Agency.
Contractor: Copley Wolff Design Group

With funding from the U.S. Environmental Protection Agency and the Massachusetts Urban Self-Help program, GWL and our sub-contractor Copley Wolff Design Group completed the construction drawings and bid documents for the Brook Street Park, a new 2.7-acre park on a former industrial laundry site along the Spicket River. Site remediation began in late August and was completed in mid-November, and park construction is scheduled to begin in early spring 2006. Construction of the Brook Street Park will be the culmination of five years of collaborative work to clean up and restore this long-neglected property, and will provide much-needed open space in one of the City's most densely populated neighborhoods. The park will also create the first new anchor for the Spicket River Greenway, envisioned as a three-mile ribbon of neighborhood parks and trails connecting Stevens Pond to the Merrimack River.



The Spicket River Greenway is envisioned as a three-mile long network of parks and trails that will one day create a "green ribbon" linking neighborhoods, business districts, schools and waterfront areas. Working in partnership with the City of Lawrence and numerous local partners, Groundwork Lawrence is implementing this vision by leading volunteer cleanups, educational and research programs, brownfield remediation, park projects, and riverbank restoration. For more information on specific projects and events, check out the stories in this edition of the newsletter.

Upcoming Events

December 15, 2005 - 6:30pm

Groundwork Lawrence Glow Gala

Please join us at the Essex Art Center for an evening of food, drink, art, and live music! Help us celebrate another year of successful projects, partnerships, and programs. Support Groundwork Lawrence while sampling the flavors of Lawrence's restaurants, bidding on lanterns made by local artists, and entering to win fantastic prizes at the door!

To purchase tickets online, go to www.mktix.com/enhc